

PLAN D'ENSEMBLE

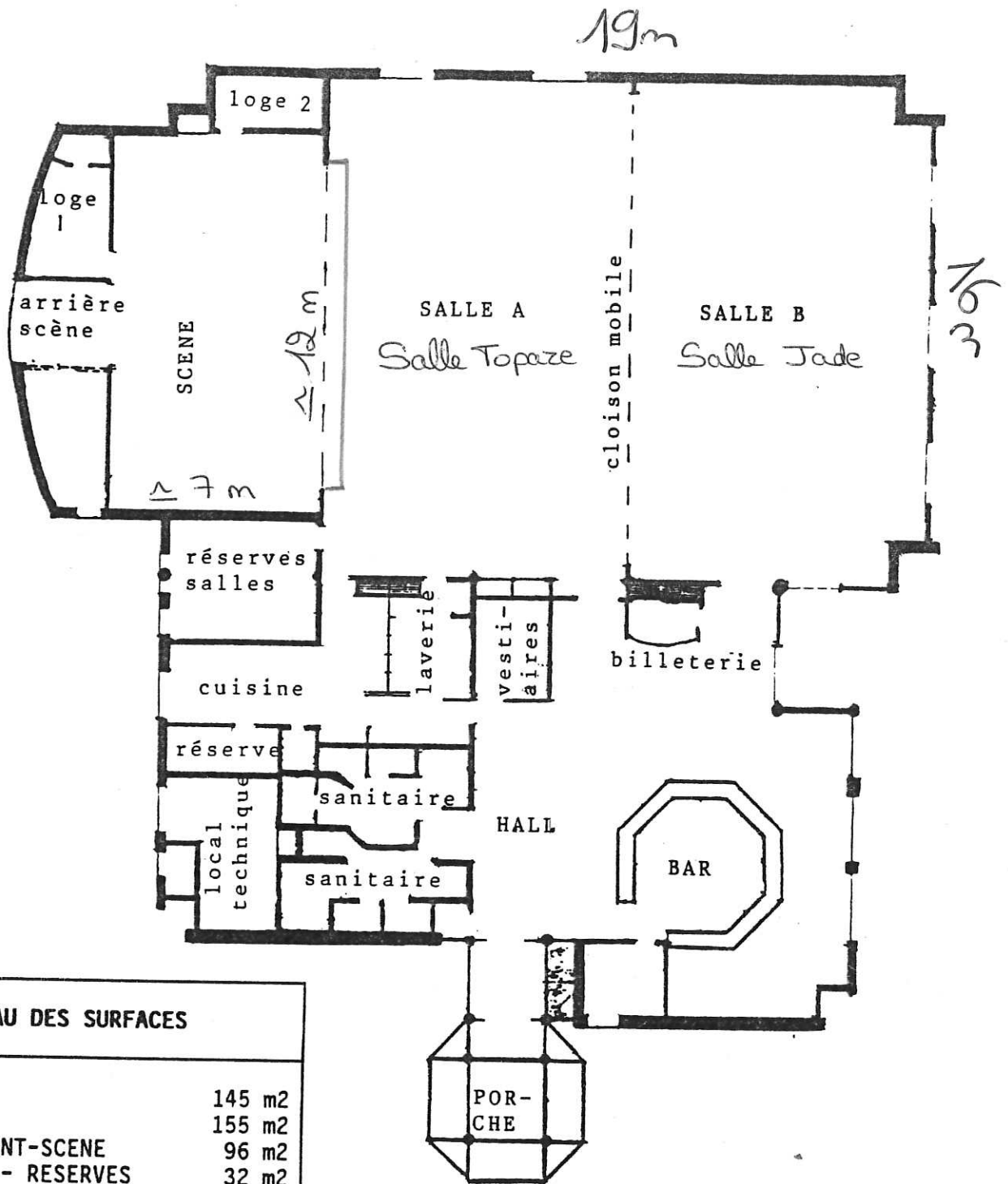


TABLEAU DES SURFACES

SALLE A	145 m ²
SALLE B	155 m ²
SCENE ET AVANT-SCENE	96 m ²
LOGES 1 & 2 - RESERVES	32 m ²
SAS - HALL - BAR	131 m ²
CAVE	6 m ²
BILLETERIE	3 m ²
VESTIAIRES	8 m ²
SANITAIRES PUBLIC	33 m ²
RESERVES SALLE	18 m ²
CUISINE	36 m ²
RESERVES CUISINE	10 m ²
LOCAL TECHNIQUE	11 m ²
ENTRETIEN	3 m ²
RANGEMENTS	3 m ²
PASSERELLE - REGIE	16 m ²

TOTAL 706 m²